

Aerial
1128 Walnut Street

Market Street East/Midtown Village
1128 Walnut Street
Philadelphia, PA

**Reduced
Rental Rate**
First 2 Months Free Rent with 5 Year Deal



For Lease

Space Available
4th Floor - 3,582 RSF divisible
5th Floor - 2,454 RSF divisible

Close Proximity to:

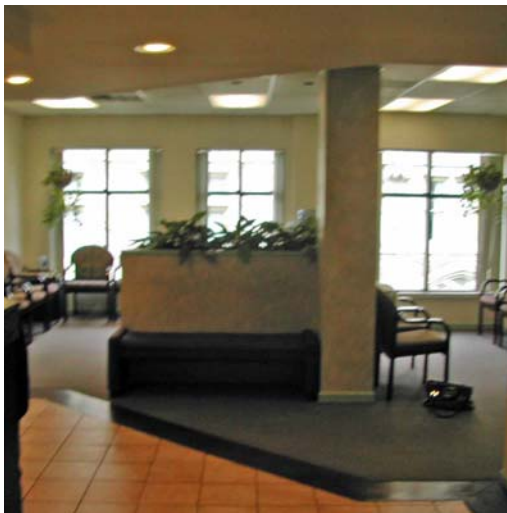
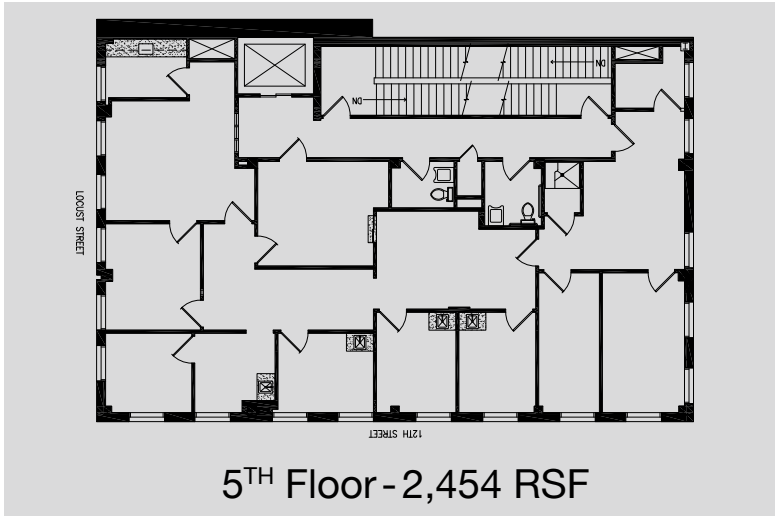
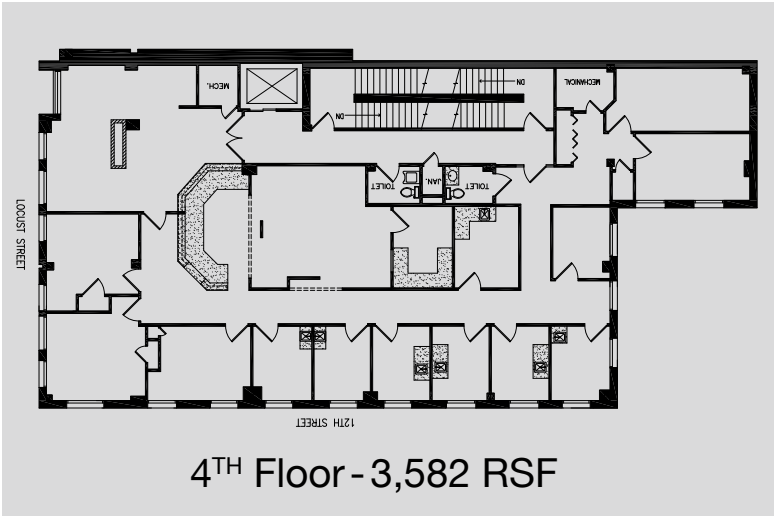
- Gallery Market East
- Thomas Jefferson University & Hospital
- City Hall
- Routes 30, 676 & 76
- Many SEPTA bus & train stops



Great Natural Light
Windows on Three Sides

Renovated
Custom Lobby

Central Business District East
1128 Walnut Street



Nearby
 Amenities



Office building featuring an attractive marble exterior

- Great Natural Light from windows on three sides
- Renovated custom lobby
- Steps away from Jefferson Hospital and mass transit
- Turn-Key build out at competitive rates

