

Centre Square Sublease

Full Floor - 28,368 SF - Will Divide



\$19.00 Full Service
Expires July 2019



Features:

- Shell condition with a full Tenant Improvement package
- Space is divisible
- On site parking
- New HVAC System
- Direct concourse access

NAI Geis Realty Group, Inc.

Commercial Real Estate Services, Worldwide.

The information contained herein has been given to us by the owner of the property or other sources we deem reliable. We have no reason to doubt its accuracy, but we do not guarantee it. All information should be verified prior to purchase or lease.

contact information

Thomas Hummel

thummel@geisrealty.com

Shane Funston

sfunston@geisrealty.com

tel 215 568 7222

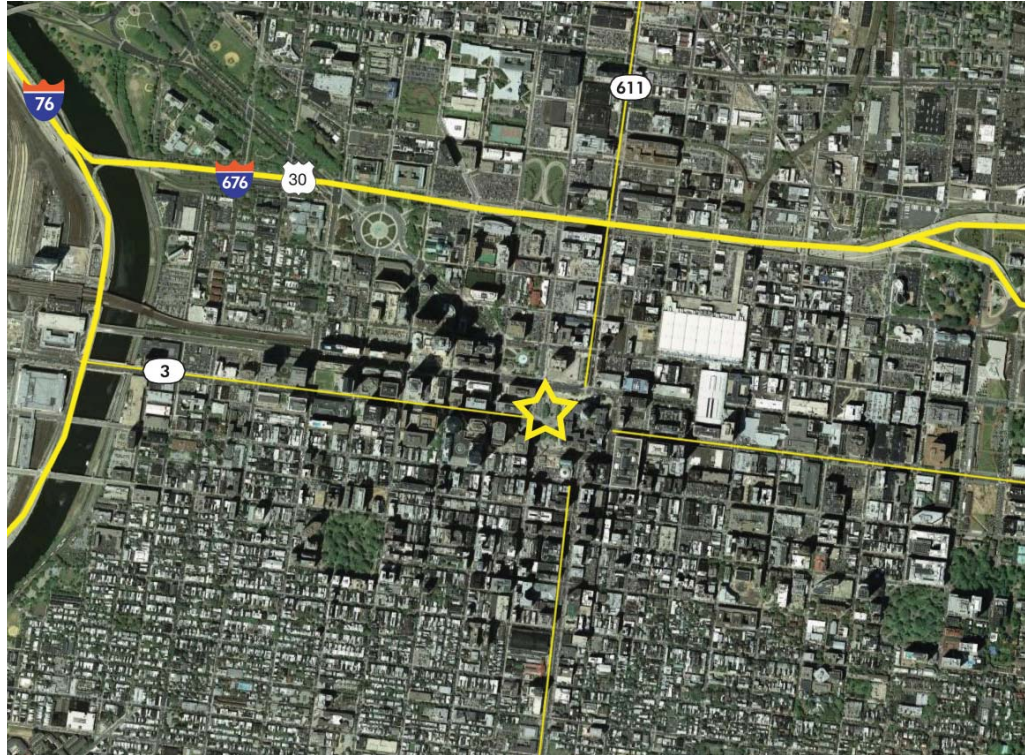
fax 215 568 5043

Centre Square

1500 Market Street

Philadelphia, PA 19102

Aerial and Images



Market Street Views



City Hall Views

