

FOR LEASE

Class "A" Building  
**1600 Market Street**  
Philadelphia, PA 19103

**\$26/SF**  
+electric

Features:

- Market Street location
- Proximity to Suburban Station
- Property Manager on site
- Conference facility
- On-site banking
- Parking available
- Strong vested ownership
- Excellent finishes with residual value

**Full Floor Available**



**NAI Geis Realty Group, Inc.**

Commercial Real Estate Services, Worldwide.

**contact information**

**Thomas Hummel**  
thummel@geisrealty.com

**Shane Funston**  
sfunston@geisrealty.com

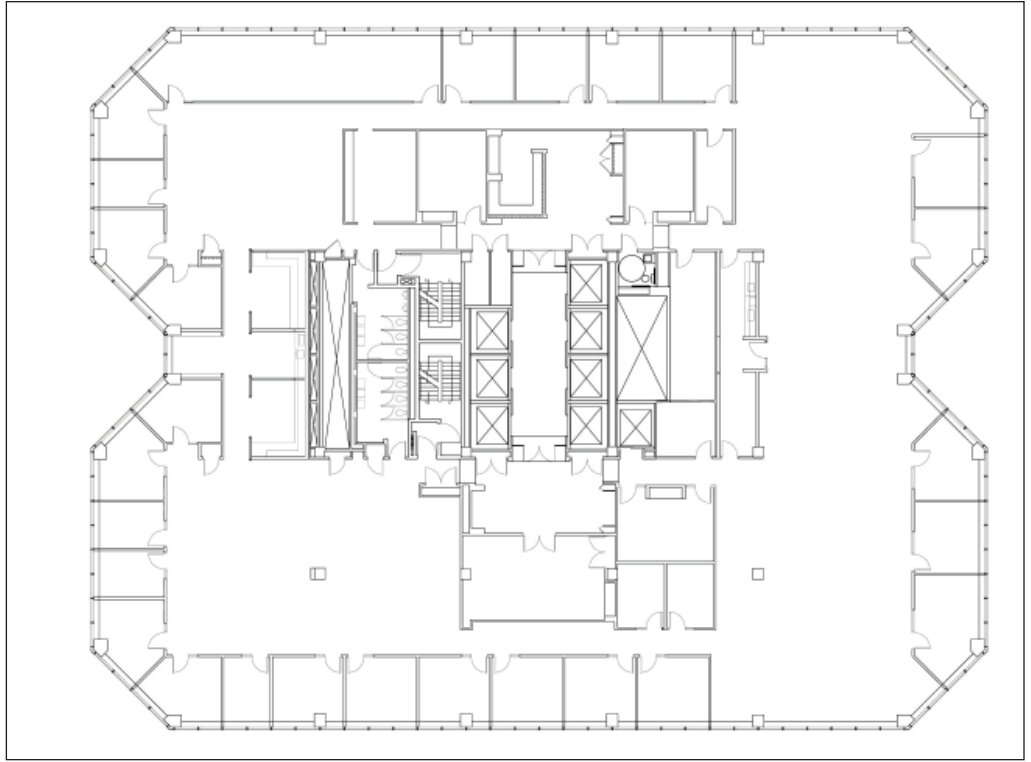
tel 215 568 7222  
fax 215 568 5043

The information contained herein has been given to us by the owner of the property or other sources we deem reliable. We have no reason to doubt its accuracy, but we do not guarantee it. All information should be verified prior to purchase or lease.

Class "A" Building  
**1600 Market Street**

Philadelphia, PA 19103

Full Floor Plan



Interior Views





### Location Features:

- Great CBD location
- Close to City Hall
- Close proximity to Suburban Station
- Market Street location
- Easy access to multiple SEPTA bus stops, regional railways, and subways

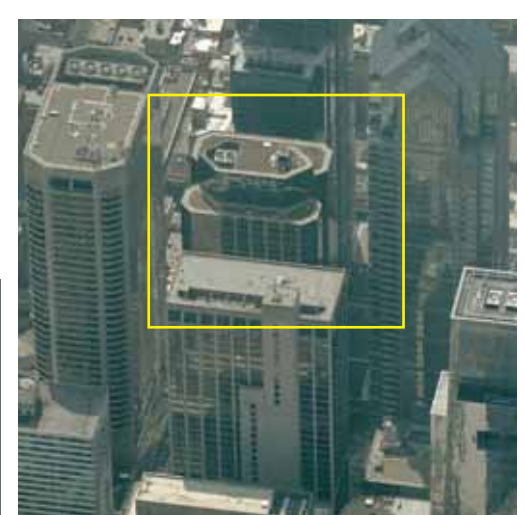
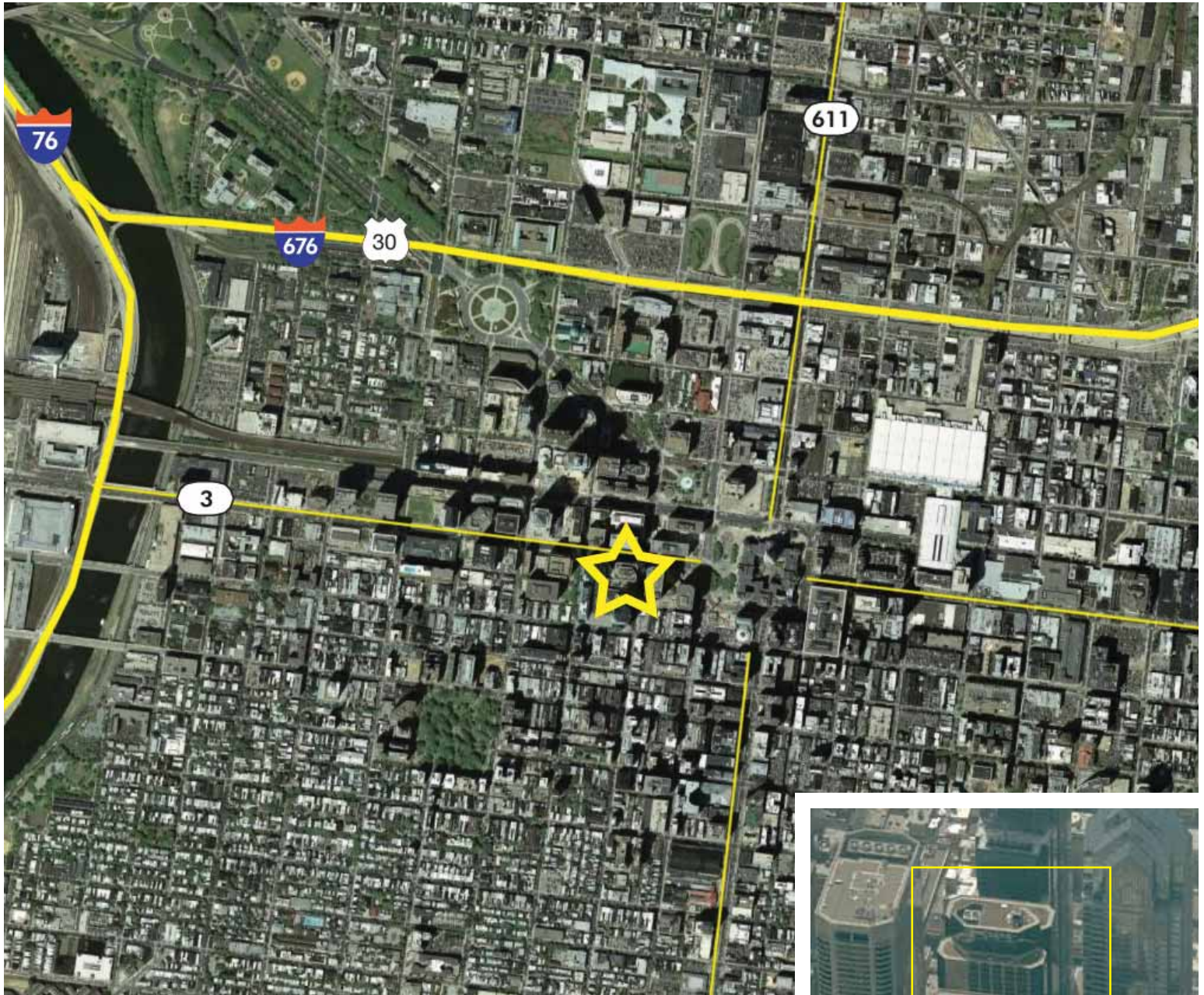
### Market Street and City Hall Views



Class "A" Building  
**1600 Market Street**

Philadelphia, PA 19103

Aerial



Easy Access to Route 611,  
Route 30, Route 3, I-95,  
I-76, and I-676