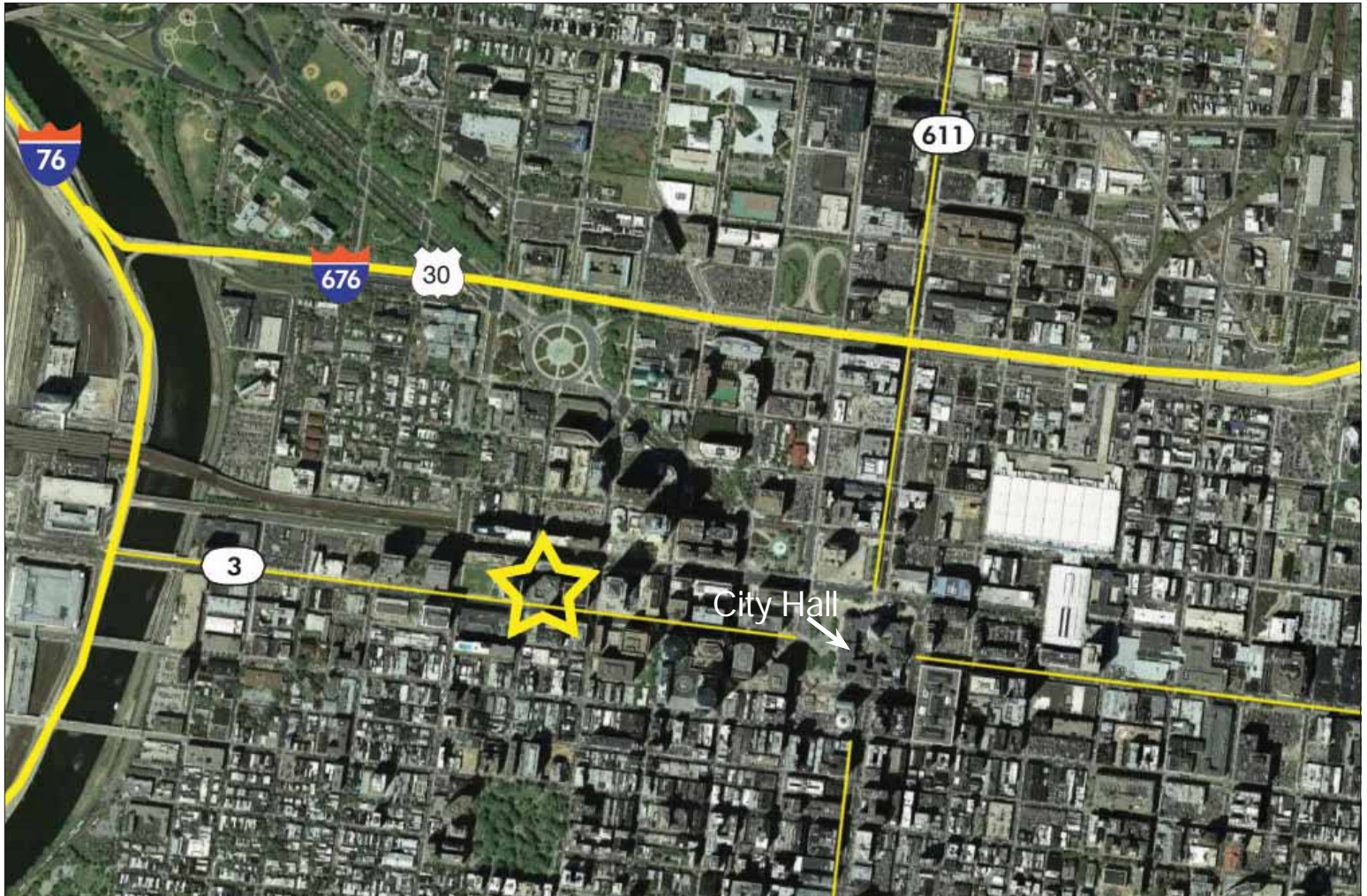


Dramatic 17<sup>th</sup> Floor Law Firm Space For Sublease

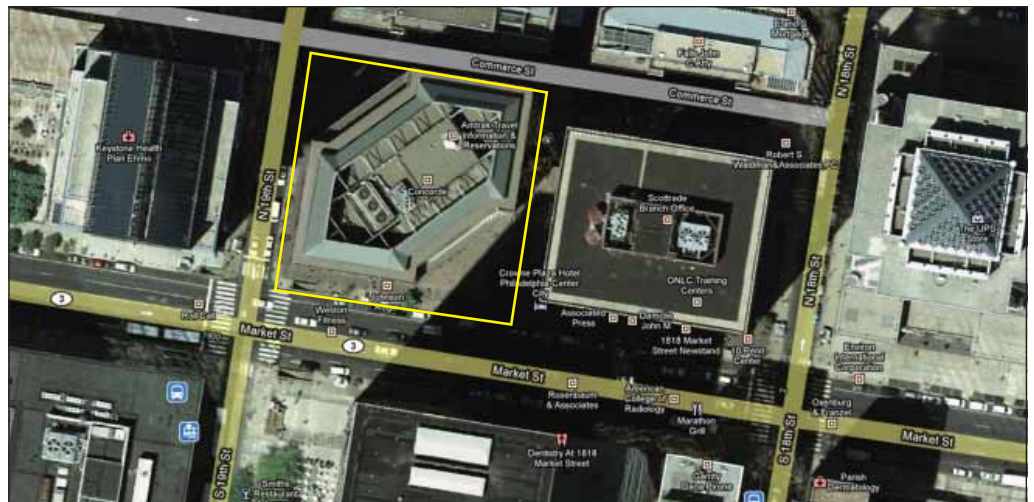
# 1835 Market Street

Philadelphia, PA 19103

Aerial



Easy Access to Broad St.,  
Route 30, Route 3, I-95,  
I-76, and I-676



**NAI** Geis Realty Group, Inc.

Commercial Real Estate Services, Worldwide.

Term Through  
February 28, 2018

FOR SUBLEASE

Dramatic 17<sup>th</sup> Floor Law Firm Space For Sublease

1835 Market Street

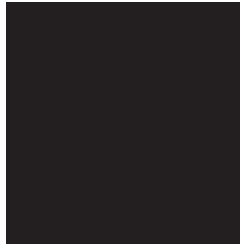
Philadelphia, PA 19103

3,640 RSF



Features:

- Plug & Play
- High end furniture available
- Superior views
- Exceptional elevator exposure
- Above standard finishes
- On-site fitness center, banking and parking
- 24/7 security access to building



**NAI** Geis Realty Group, Inc.

Commercial Real Estate Services, Worldwide.

contact information

**Thomas Bond**

[tbond@geisrealty.com](mailto:tbond@geisrealty.com)

**Jack Byers**

[jbyers@geisrealty.com](mailto:jbyers@geisrealty.com)

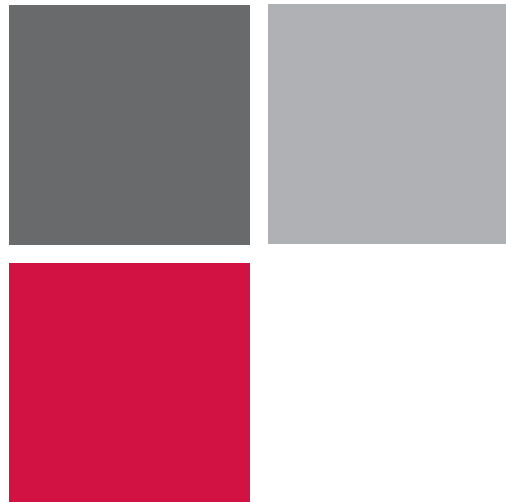
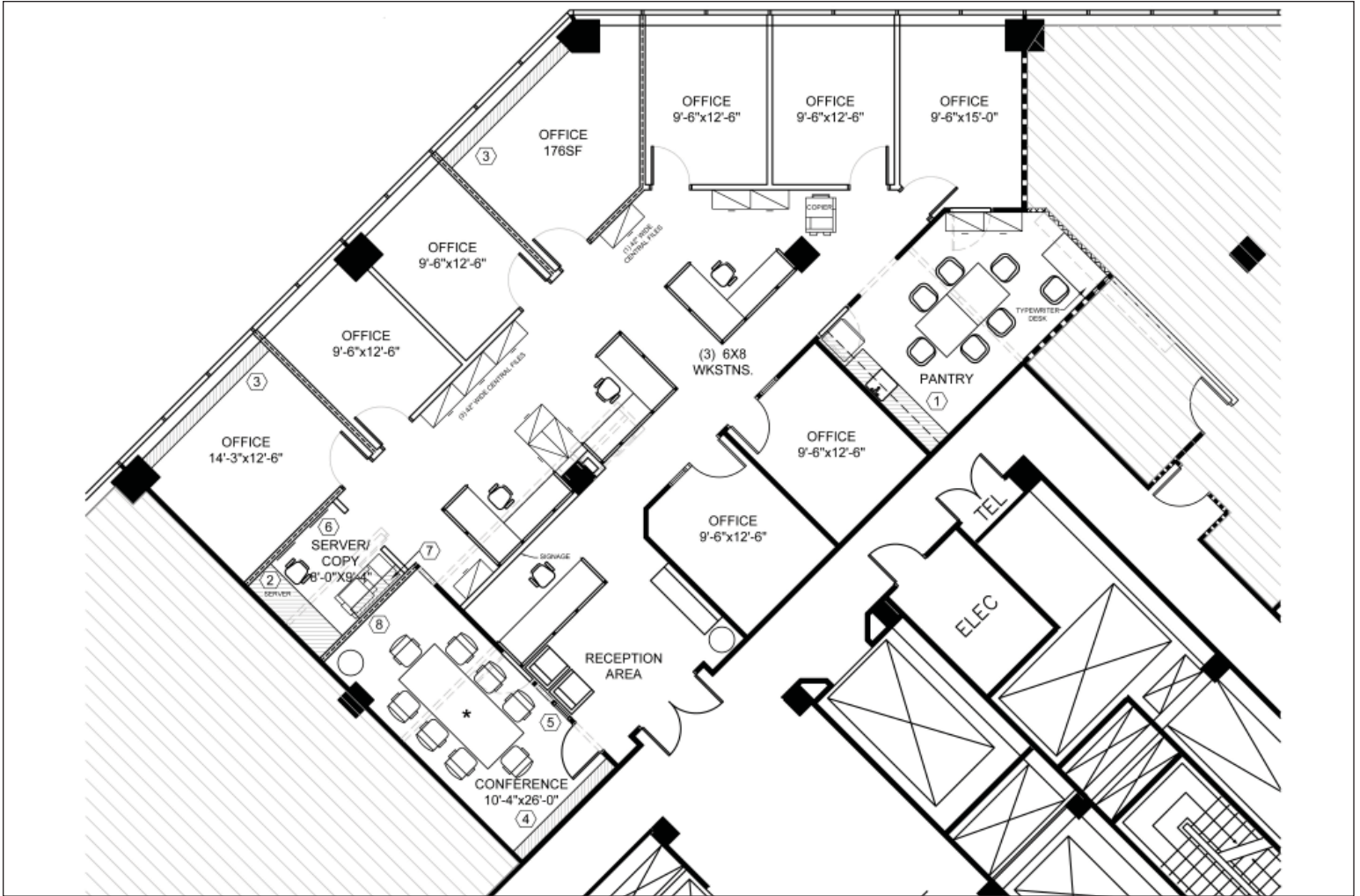
tel 215 568 7222

fax 215 568 5043

The information contained herein has been given to us by the owner of the property or other sources we deem reliable. We have no reason to doubt its accuracy, but we do not guarantee it. All information should be verified prior to purchase or lease.

Dramatic 17<sup>th</sup> Floor Law Firm Space For Sublease  
**1835 Market Street**  
Philadelphia, PA 19103

Floor Plan



## Location Features:

- Close to City Hall
- Market Street location
- Easy access to multiple SEPTA bus stops, regional railways, trolleys, and subways
- Easy access to many restaurants, delis, banks, and hotels

## Interior Photos

