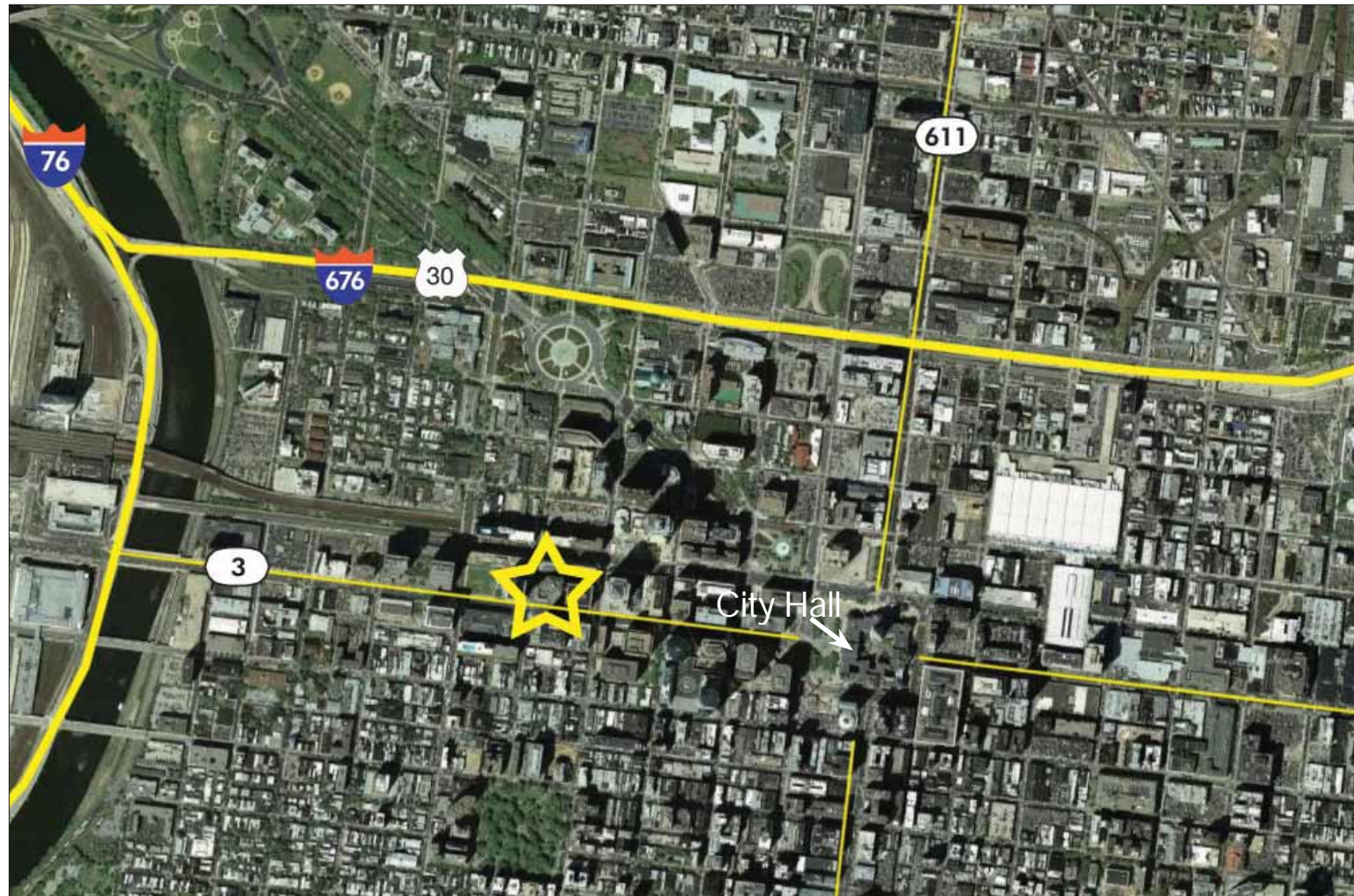


Dramatic 17th Floor Law Firm Space For Sublease
1835 Market Street
Philadelphia, PA 19103

Aerial

Term Through
February 28, 2018

FOR SUBLEASE



Dramatic 17th Floor Law Firm Space For Sublease
1835 Market Street
Philadelphia, PA 19103

3,640 RSF

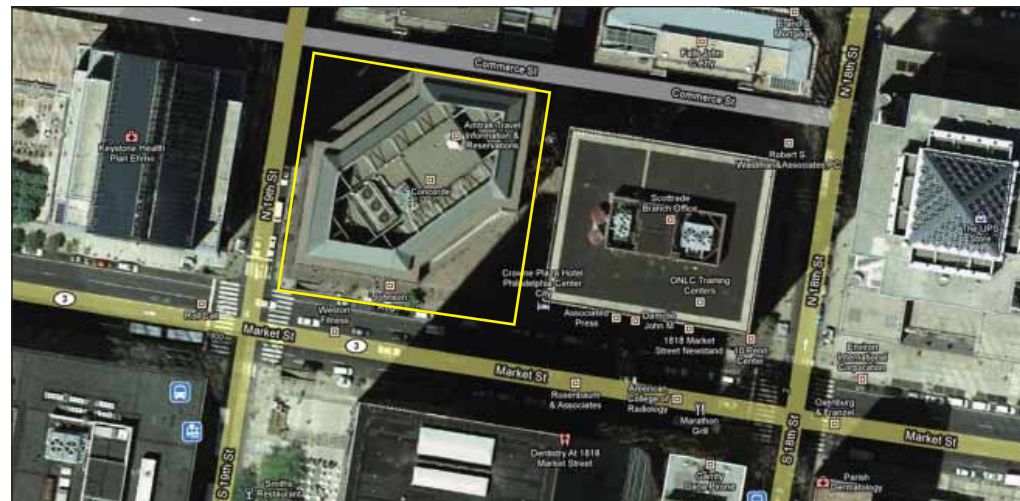


Features:

- Plug & Play
- High end furniture available
- Superior views
- Exceptional elevator exposure
- Above standard finishes
- On-site fitness center, banking and parking
- 24/7 security access to building



Easy Access to Broad St.,
Route 30, Route 3, I-95,
I-76, and I-676



NAI Geis Realty Group, Inc.
Commercial Real Estate Services, Worldwide.

NAI Geis Realty Group, Inc.
Commercial Real Estate Services, Worldwide.

contact information
Thomas Bond
tbond@geisrealty.com

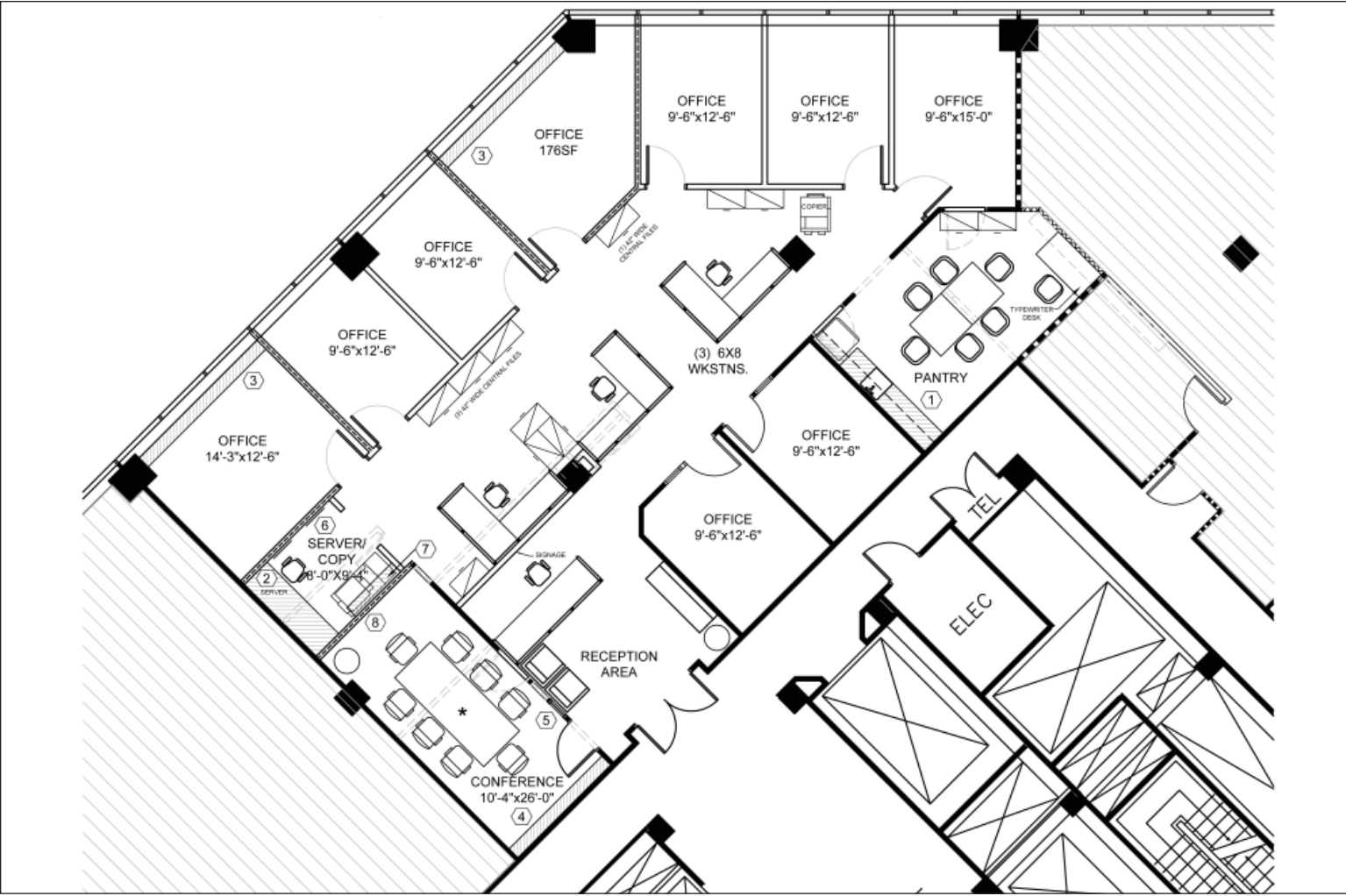
Jack Byers
jbyers@geisrealty.com

tel 215 568 7222
fax 215 568 5043

The information contained herein has been given to us by the owner of the property or other sources we deem reliable. We have no reason to doubt its accuracy, but we do not guarantee it. All information should be verified prior to purchase or lease.

Dramatic 17th Floor Law Firm Space For Sublease
1835 Market Street
 Philadelphia, PA 19103

Floor Plan



Interior Photos

- Location Features:
- Close to City Hall
 - Market Street location
 - Easy access to multiple SEPTA bus stops, regional railways, trolleys, and subways
 - Easy access to many restaurants, delis, banks, and hotels

