

Bridgeport Plaza
408 East 4th Street
Bridgeport, PA 19405

\$15.00/SF
+Utilities

For Lease
1,712+/- SF to 11,212+/- SF
Available



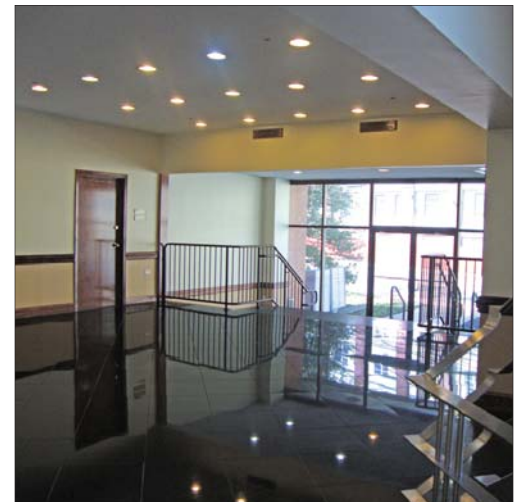
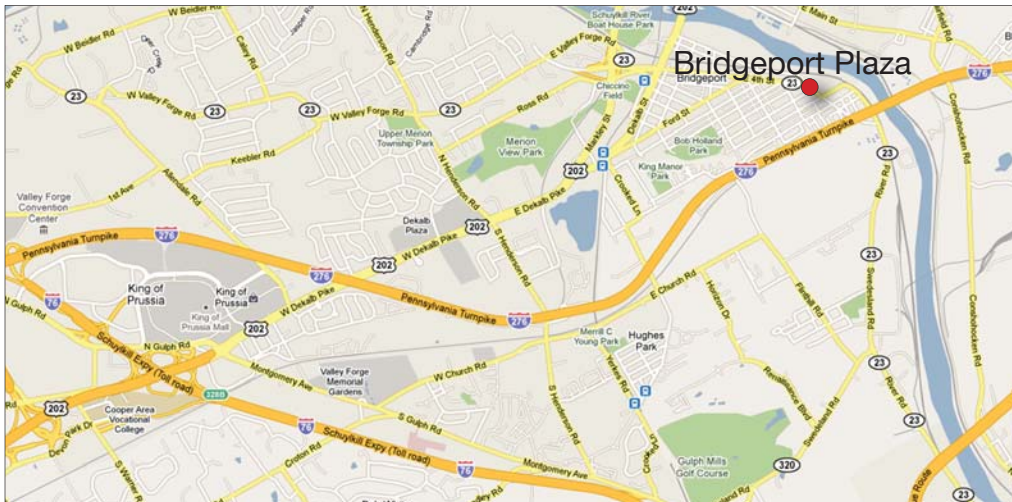
Features:

- Situated on Route 23 and less than 10 minutes from Routes 202, 30, 422, and Interstates 76, 476, 276
- Furniture potentially available
- High parking ratio
- Flexible terms
- Immediate occupancy
- Upgraded finishes
- Abundant natural light/ continuous window line
- Area amenities include restaurants, retail, daycare centers, dry cleaning, etc.
- Public transportation nearby: SEPTA R6 and Bus 99

*Located within minutes of
Schuylkill Expressway, PA Turnpike,
Route 202, and I-476*

Availabilities

Suite 204	7,700+/- SF
Suite 203	1,712+/- SF
Suite 207	1,800+/- SF



NAI Geis Realty Group, Inc.

Commercial Real Estate Services, Worldwide.

contact information

Ross Weisman

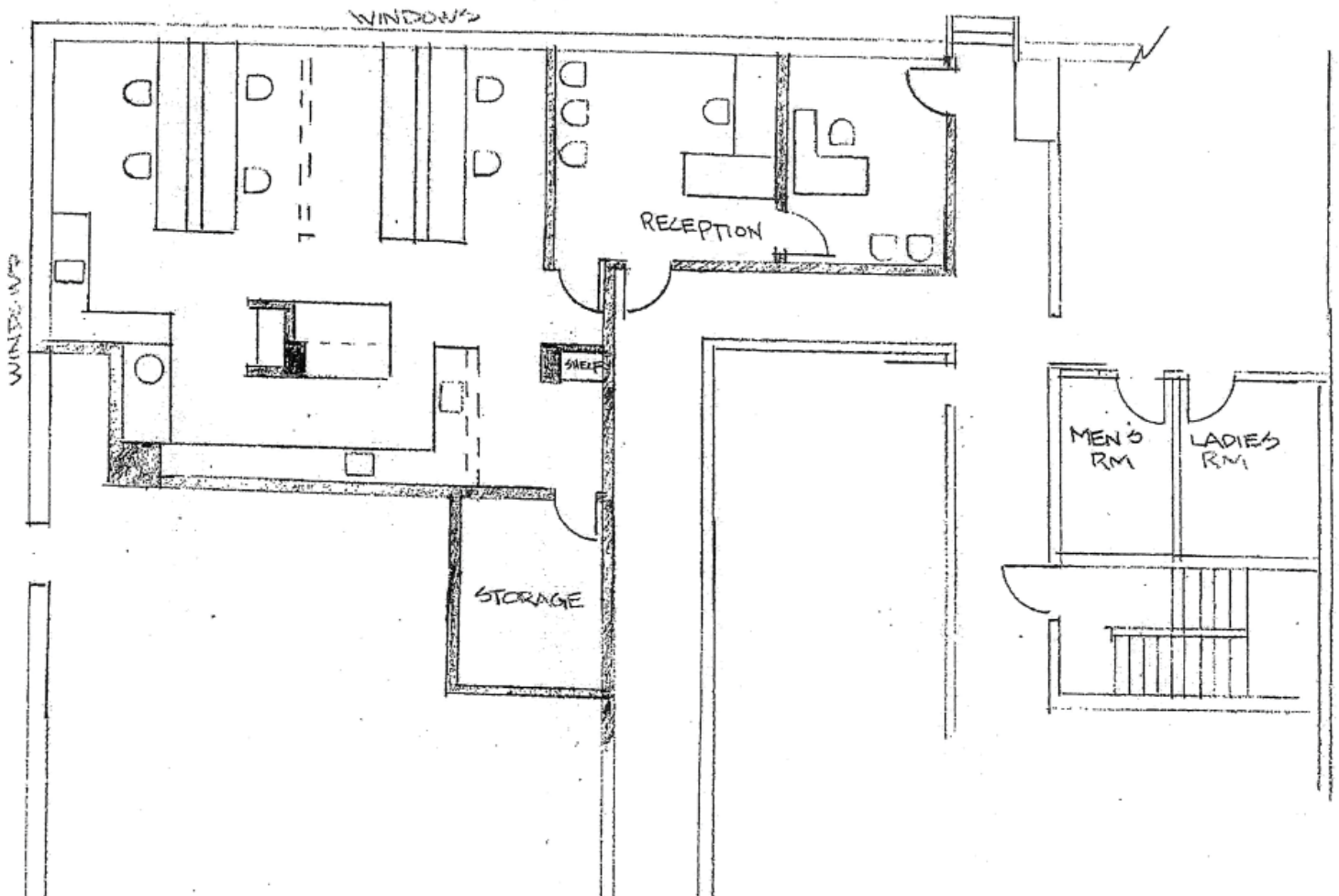
rweisman@geisrealty.com

tel 610 989 0300

fax 610 989 0234

The information contained herein has been given to us by the owner of the property or other sources we deem reliable. We have no reason to doubt its accuracy, but we do not guarantee it. All information should be verified prior to purchase or lease.

Suite 203
1,712 SF+/-



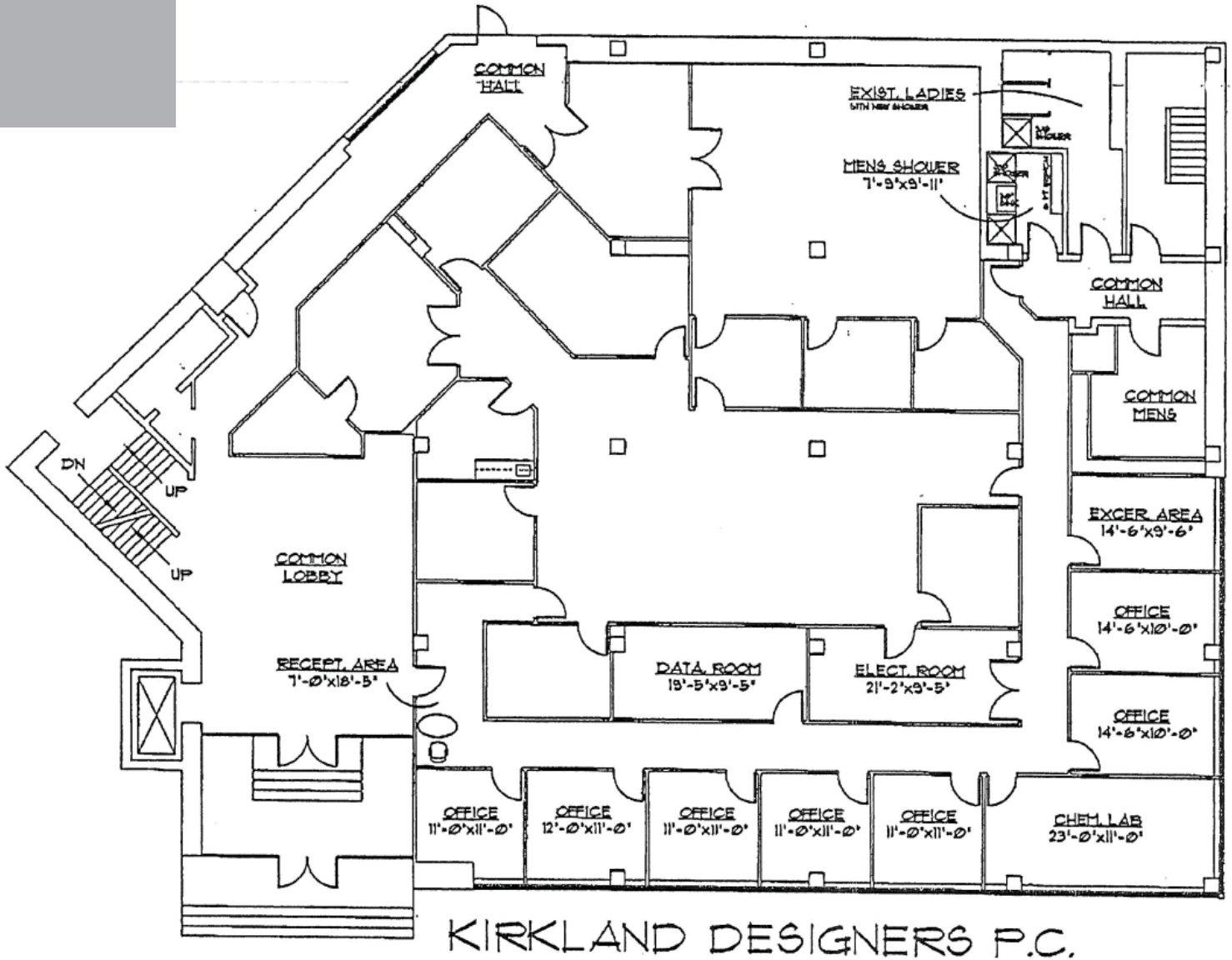
NAI Geis Realty Group, Inc.

Commercial Real Estate Services, Worldwide.

The information contained herein has been given to us by the owner of the property or other sources we deem reliable. We have no reason to doubt its accuracy, but we do not guarantee it. All information should be verified prior to purchase or lease.

tel 610 989 0300
fax 610 989 0234

Suite 204
7,700 SF+/-



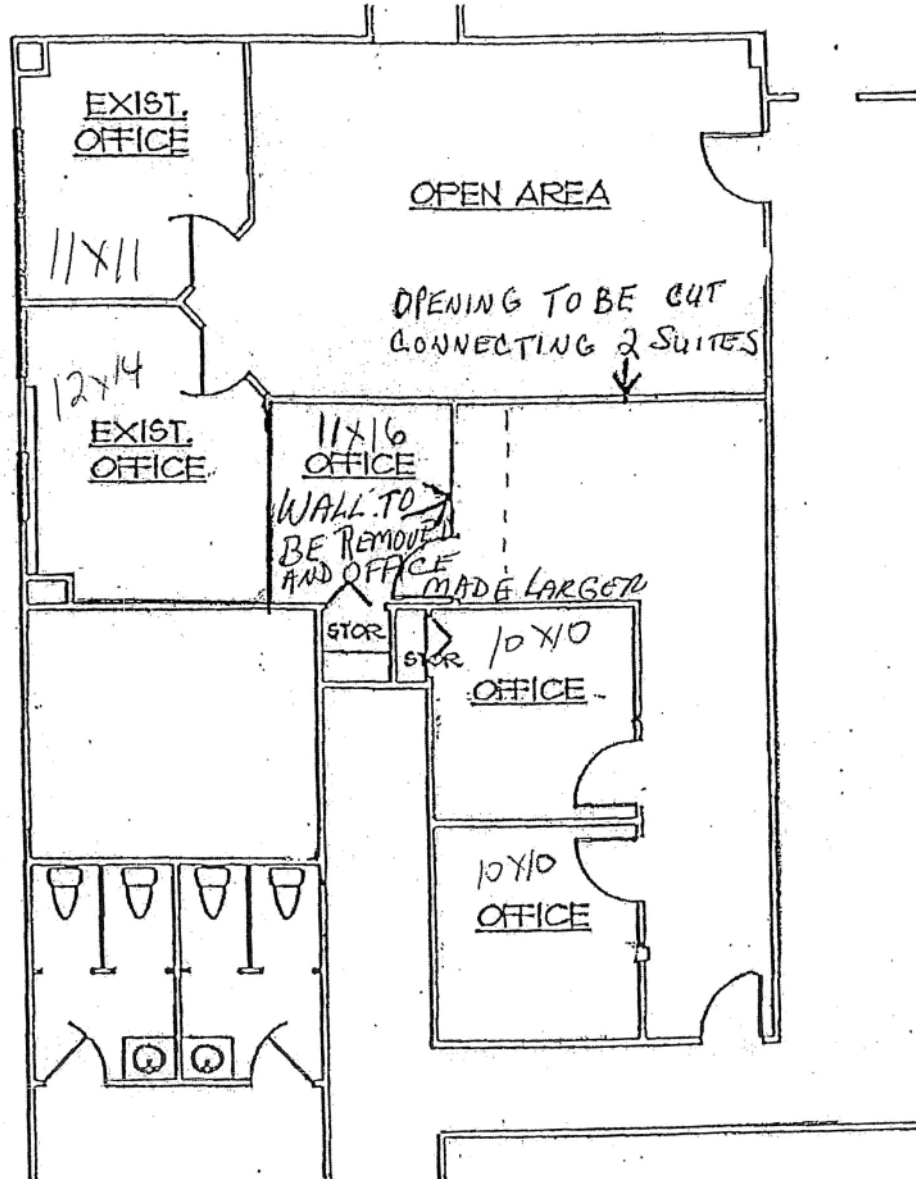
NAI Geis Realty Group, Inc.

Commercial Real Estate Services, Worldwide.

The information contained herein has been given to us by the owner of the property or other sources we deem reliable. We have no reason to doubt its accuracy, but we do not guarantee it. All information should be verified prior to purchase or lease.

tel 610 989 0300
fax 610 989 0234

Suite 207
1,800 SF



1 PARTIAL FIRST FLOOR PLAN
EK-2 SCALE: 1/8" = 1'-0"

NAI Geis Realty Group, Inc.

Commercial Real Estate Services, Worldwide.

The information contained herein has been given to us by the owner of the property or other sources we deem reliable. We have no reason to doubt its accuracy, but we do not guarantee it. All information should be verified prior to purchase or lease.

tel 610 989 0300
fax 610 989 0234