

# Newly Renovated Office Space 600 Reed Road Broomall, PA

# For Lease

## 19,226 SF

\$20 + Electric



## AVAILABILITIES

1st floor 616 SF

2nd floor 828 SF

3rd floor 2,161 - 4,219 SF

**Total Available 5,663 SF**

### Upgrading lobby and common areas

- 42,254 SF, three story building
- 9' finished ceilings throughout
- Building signage rights available to full floor tenant
- Conveniently located I-476 (Blue Route), Exit 3



*Premier  
Delaware County  
Location*

### contact information

**Tom Bond**

tbond@geisrealty.com

**Jack Byers**

jbyers@geisrealty.com

tel 215 568 7222

fax 215 568 5043

www.geisrealty.com

**NAI Geis Realty Group, Inc.**

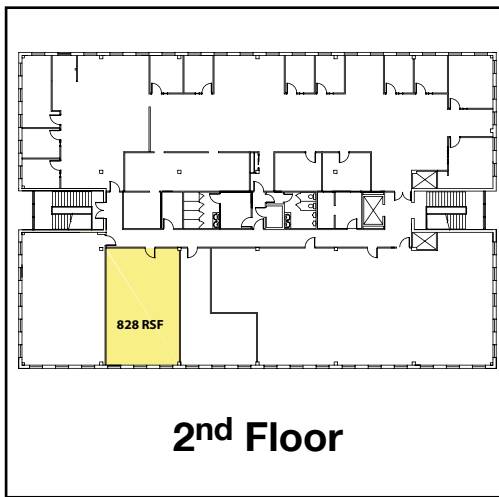
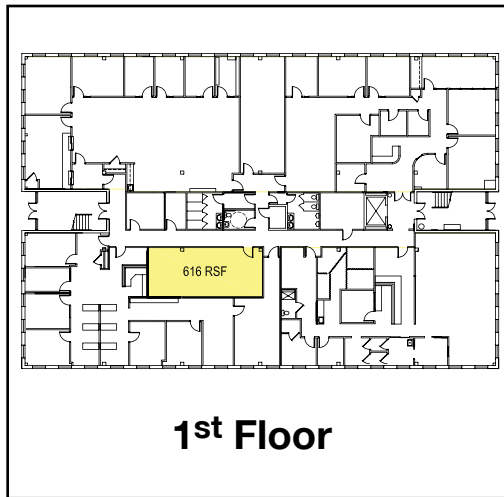
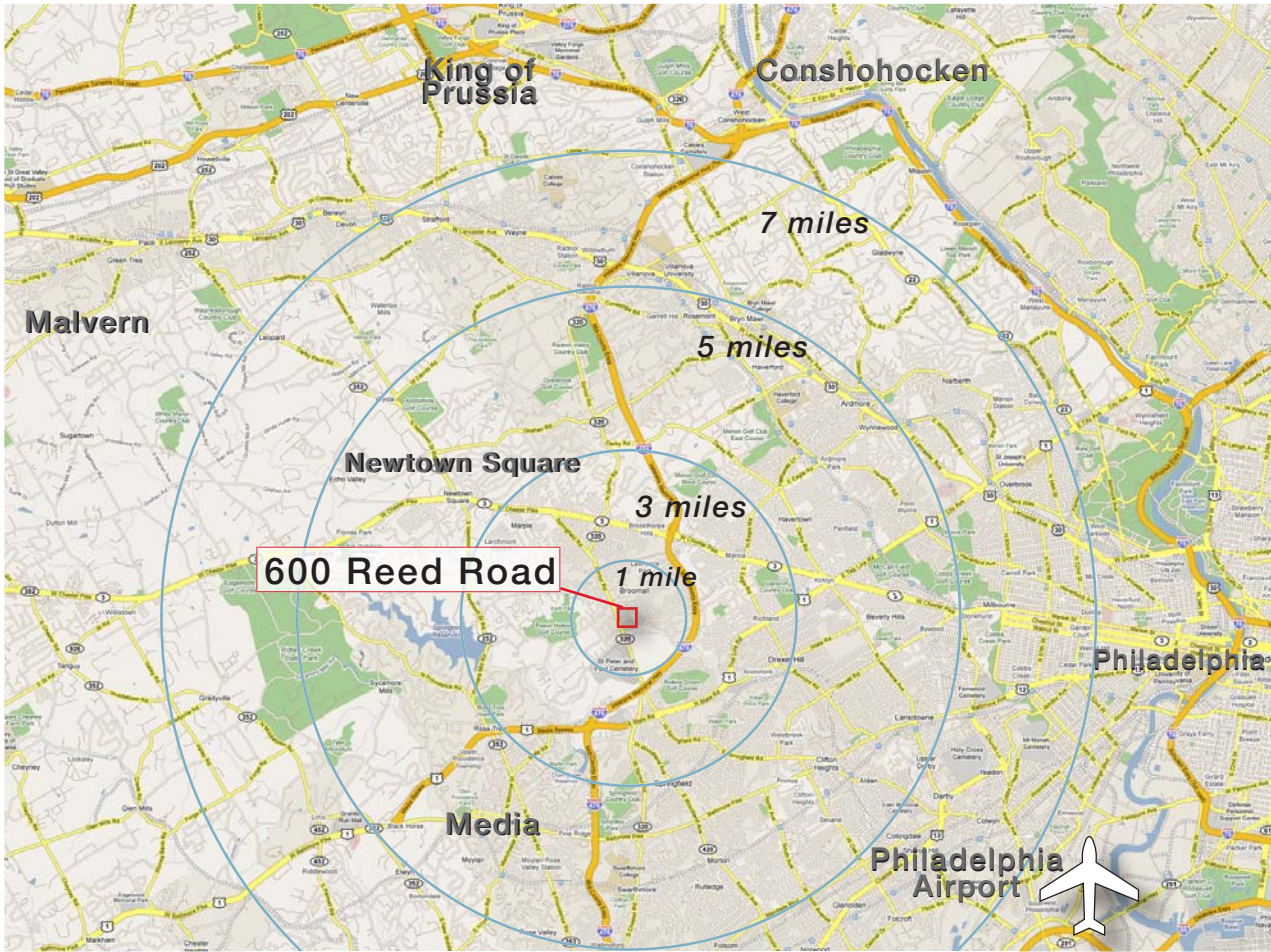
Commercial Real Estate Services, Worldwide.

The information contained herein has been given to us by the owner of the property or other sources we deem reliable. We have no reason to doubt its accuracy, but we do not guarantee it. All information should be verified prior to purchase or lease.

# 600 Reed Road

Broomall, PA

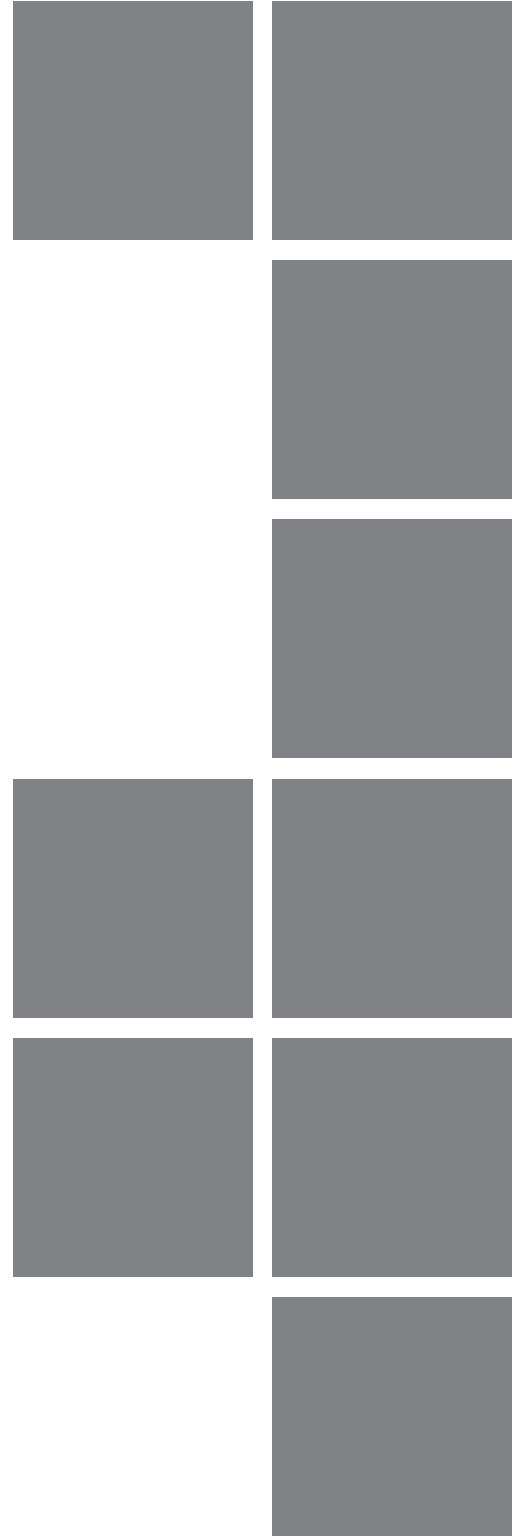
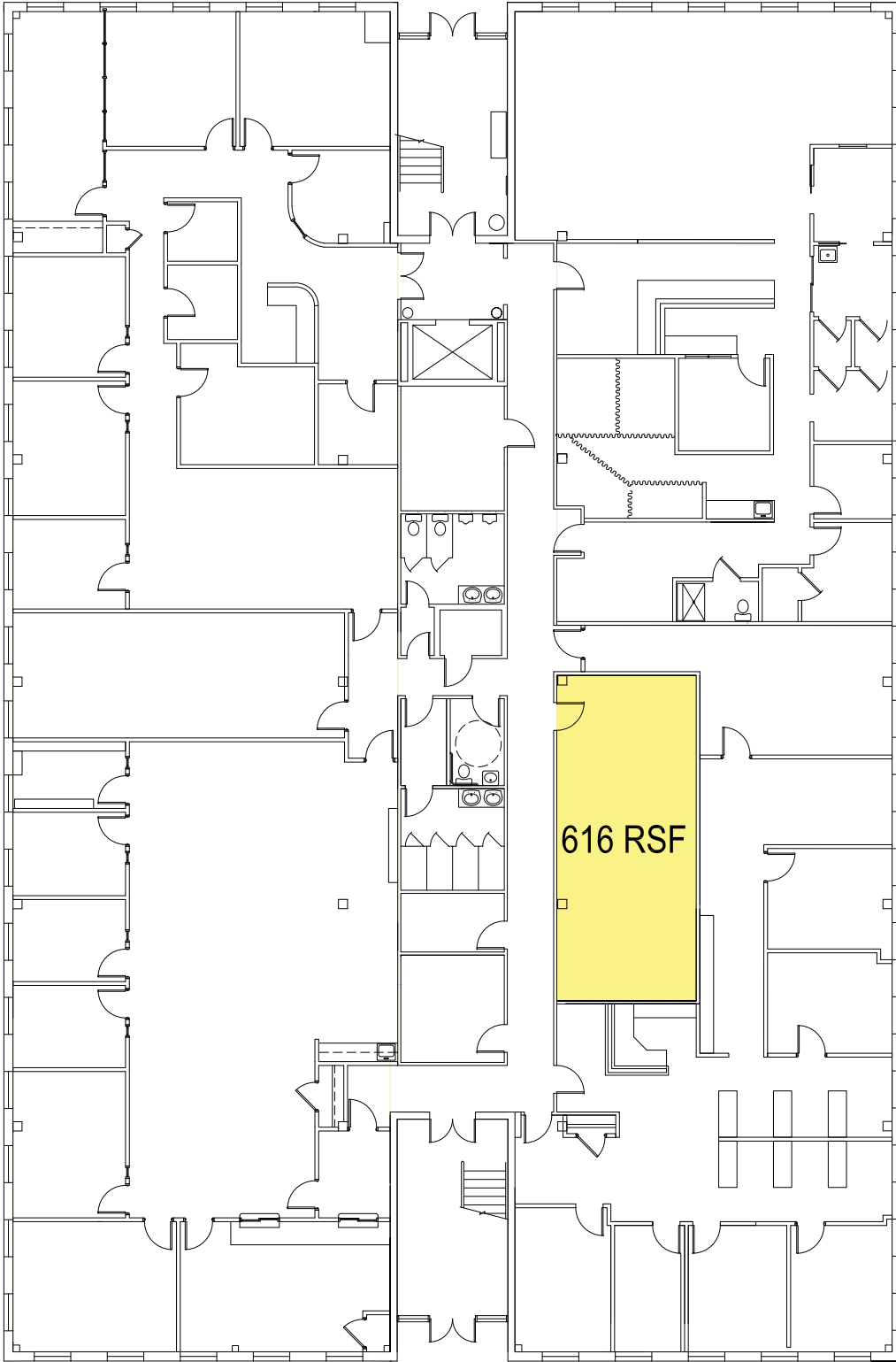
# Floor Plans and Amenities



# 600 Reed Road

Broomall, PA

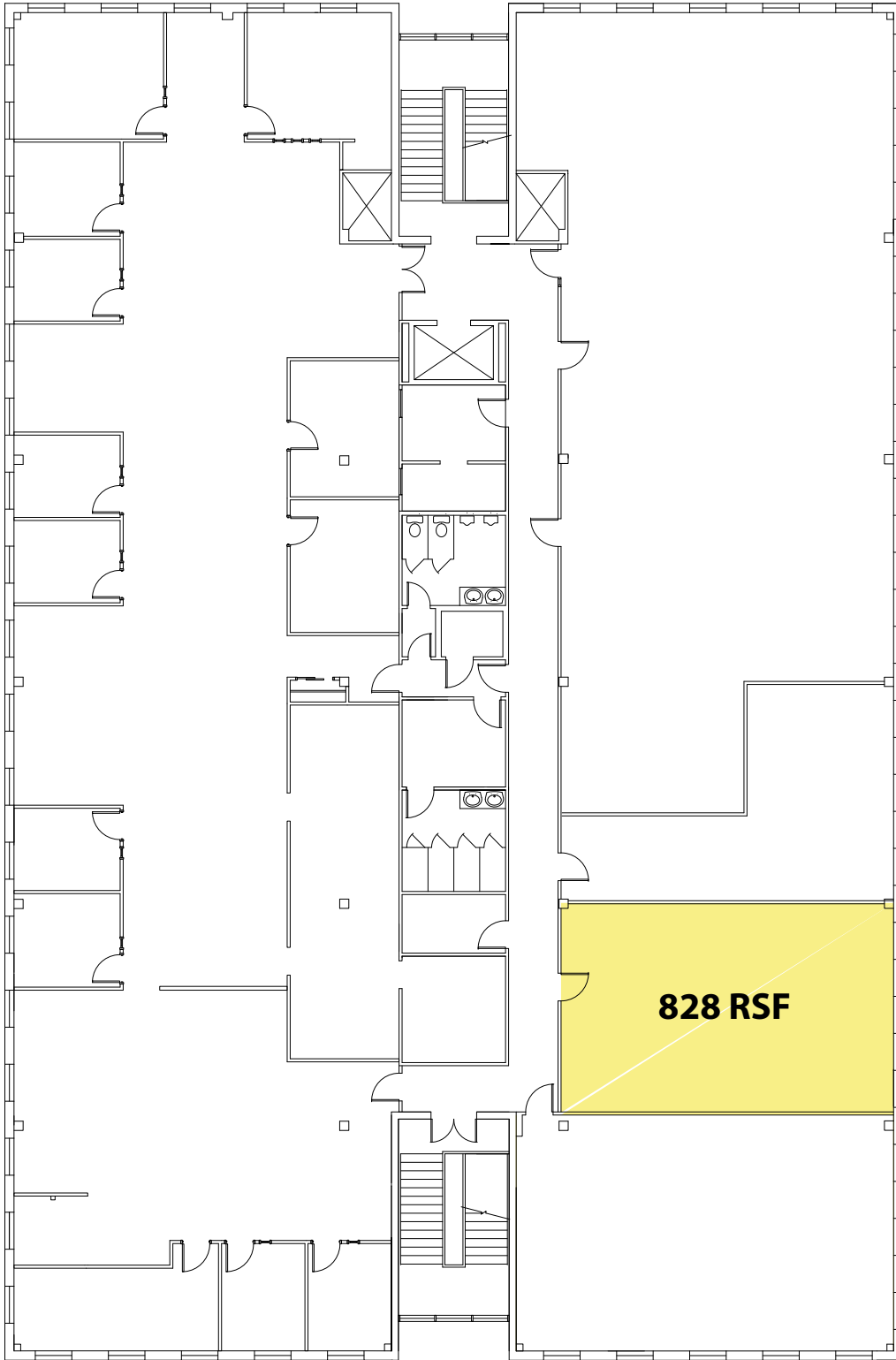
## First Floor Floor Plan



# 600 Reed Road

Broomall, PA

## Second Floor Floor Plan



# 600 Reed Road

Broomall, PA

## Third Floor Floor Plan

