

# Office/Medical Space Exton Professional Building

319 North Pottstown Pike | Exton, PA 19341

## For Lease

1st Floor Space  
864 SF - 1,665 SF

3rd Floor Space  
4,329 SF



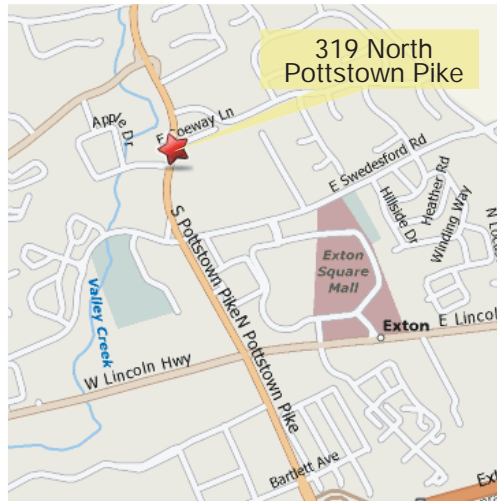
Suite 101 : 1,112 SF  
3 private offices  
Waiting room & Kitchenette  
Receptionist area

Suite 102 : 1,665 SF  
4 private exam rooms  
Waiting room  
Private ADA restroom  
Kitchenette & Storage room  
Private exterior entrance

Suite 103 : 864 SF  
Open floor plan & Kitchenette

Suite 106 : 1,427 SF  
Formal dental office

Suite 310 : 4,329 SF



## Building Features:

- \$16.50 + Electric
- Convenient access to Routes 100, 202, 401, 30 Bypass
- Near the Exton Mall, shopping and restaurants
- High visibility
- Monument exterior signage
- High parking ratio
- Ownership & Property Management on site
- Flexible terms

**NAI** Geis Realty Group, Inc.

Commercial Real Estate Services, Worldwide.

### contact information

Paul Wolfson

[pwolfson@geisrealty.com](mailto:pwolfson@geisrealty.com)

tel 610 989 0300

fax 610 989 0234

[www.geisrealty.com](http://www.geisrealty.com)

The information contained herein has been given to us by the owner of the property or other sources we deem reliable. We have no reason to doubt its accuracy, but we do not guarantee it. All information should be verified prior to purchase or lease.

# Office/Medical Space Exton Professional Building

319 North Pottstown Pike | Exton, PA 19341

# Floorplan 1st Floor



## Suite 101

1st Floor  
1,112 SF

## Suite 102

1st Floor  
1,665 SF

## Suite 103

1st Floor  
864 SF

## Suite 106

1st Floor  
1,427 SF

**NAI** Geis Realty Group, Inc.

Commercial Real Estate Services, Worldwide.

### contact information

Paul Wolfson

[pwolfson@geisrealty.com](mailto:pwolfson@geisrealty.com)

tel 610 989 0300

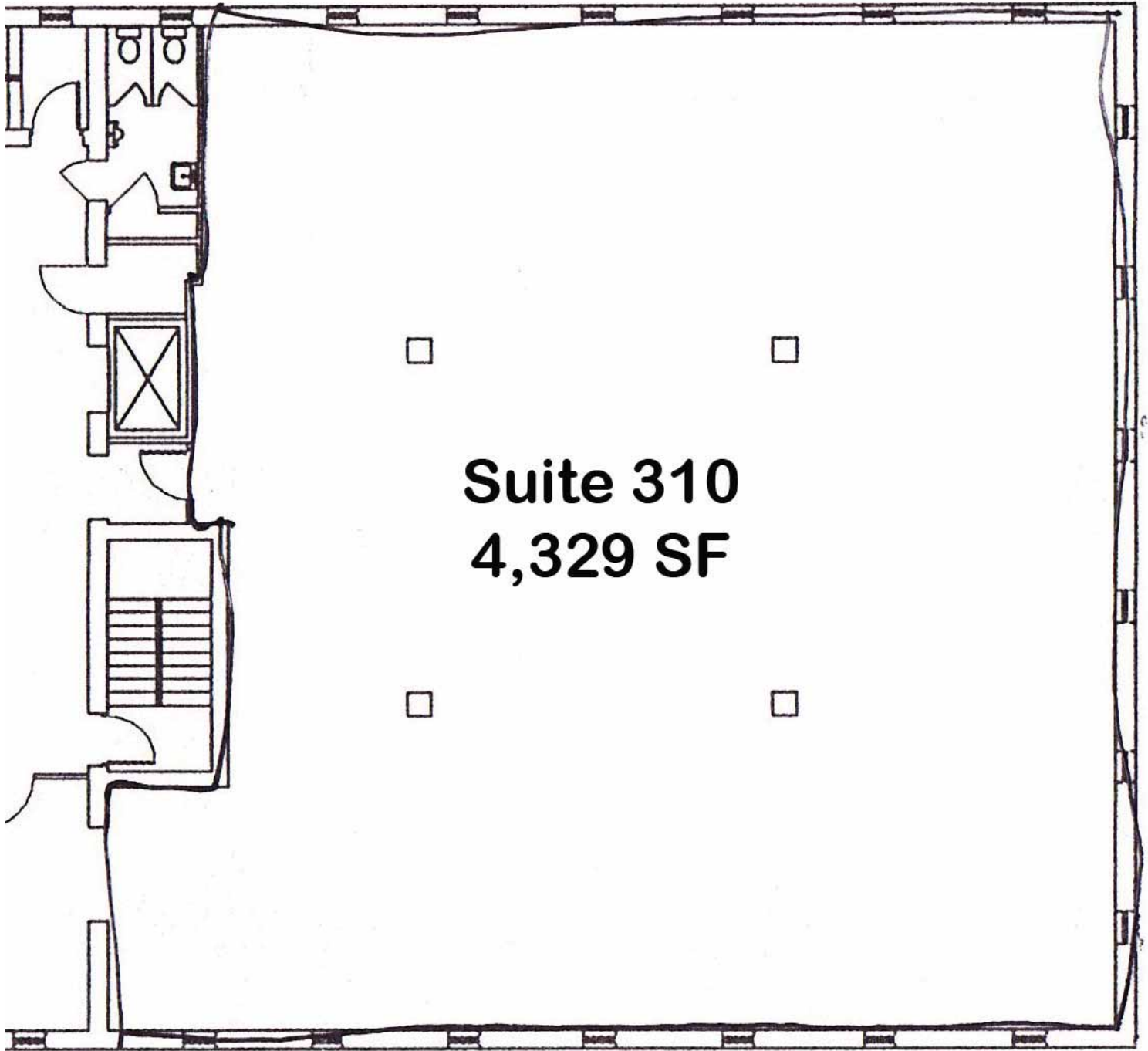
fax 610 989 0234

[www.geisrealty.com](http://www.geisrealty.com)

The information contained herein has been given to us by the owner of the property or other sources we deem reliable. We have no reason to doubt its accuracy, but we do not guarantee it. All information should be verified prior to purchase or lease.

Office/Medical Space  
**Exton Professional Building**  
319 North Pottstown Pike | Exton, PA 19341

**Floorplan**  
**3rd Floor**



**NAI** Geis Realty Group, Inc.  
Commercial Real Estate Services, Worldwide.

**contact information**  
**Paul Wolfson**  
pwolfson@geisrealty.com

tel 610 989 0300  
fax 610 989 0234  
www.geisrealty.com

The information contained herein has been given to us by the owner of the property or other sources we deem reliable. We have no reason to doubt its accuracy, but we do not guarantee it. All information should be verified prior to purchase or lease.