



United Plaza was recently awarded the Building Owners and Managers Association of Philadelphia's (BOMA's):

- Best of the Best: Best Lobby Renovation Award
- Best of the Best: Cleanest Building Award

Class "A" Office For Lease

Full Floor Available-30,632 SF

UNITED PLAZA

30 South 17th Street, Philadelphia, PA 19103

1,042 - 6,850 SF
Contiguous



Floor	Availability	Type
Lower Level*	14,692 RSF	Retail-Office
1st Floor*	1,868 RSF	Retail-Office
8th Floor	30,632 RSF	Lease-Office
14th Floor	6,925 RSF	Lease-Office
16th Floor	7,720 RSF	Lease-Office
17th Floor	13,499 RSF	Lease-Office

* Can be combined for a dramatic contiguous retail space of 16,560 RSF



NAI Geis Realty Group, Inc.

Commercial Real Estate Services, Worldwide.

contact information

Thomas Bond

tbond@geisrealty.com

W. Thomas Hummel

thummel@geisrealty.com

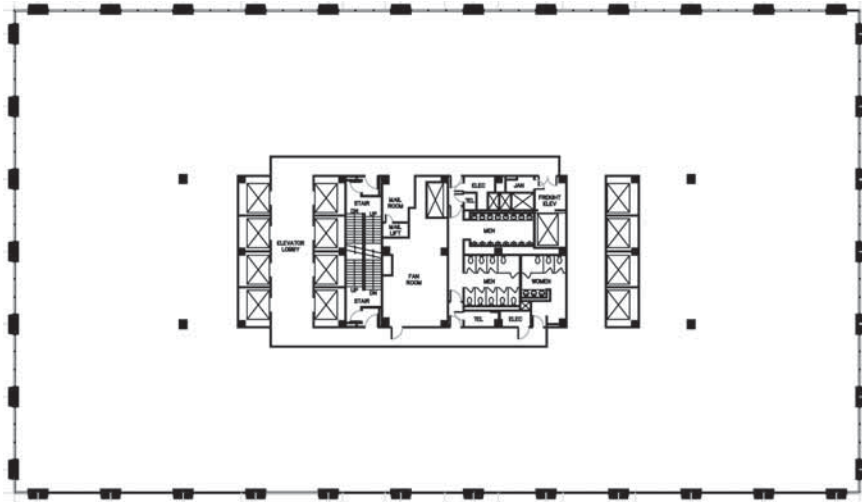
tel 215 568 7222

fax 215 568 5043

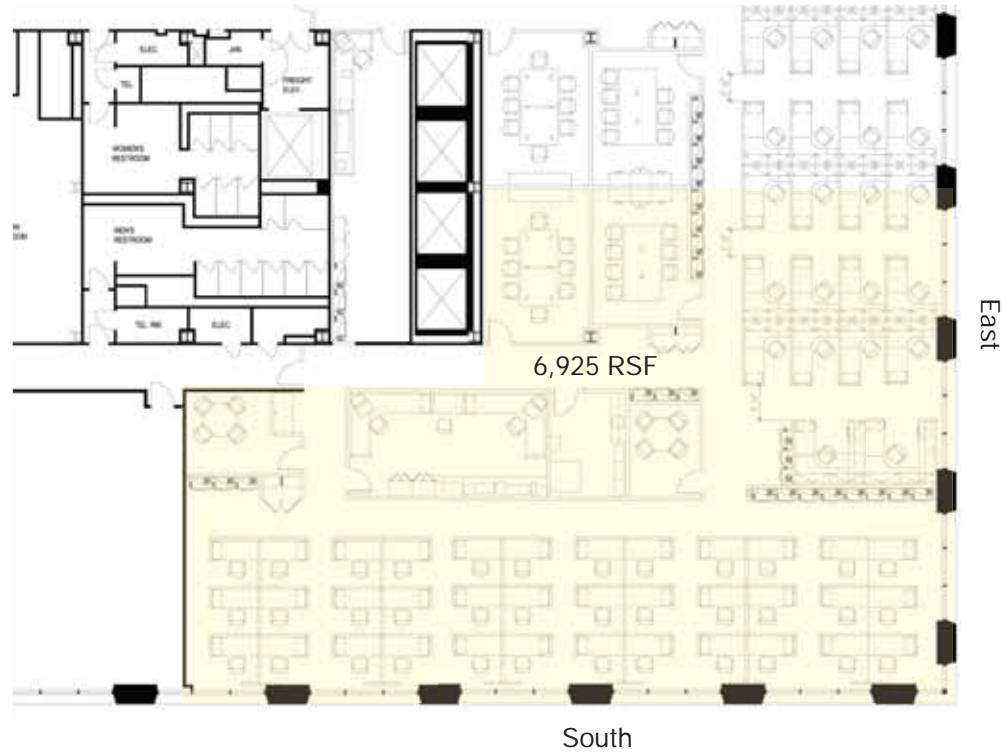
UNITED PLAZA

8th Floor
30,632 SF

Available to divide



14th Floor
6,925 SF



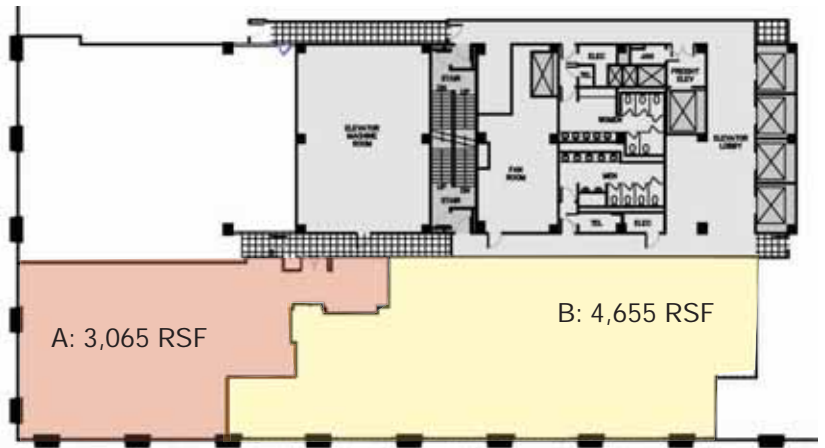
Features

- Superior southern views
- High-end finishes throughout
- Interior offices and conference areas
- Open floor plan

16th Floor-7,720 SF

Possible options:
3,341 square feet
or entire floor 7,720 square feet

- Nice reception area
- Full Kitchen
- Two conference rooms
- Four offices
- Open area for workstations, copy area and files
- Double door entrance off elevator lobby

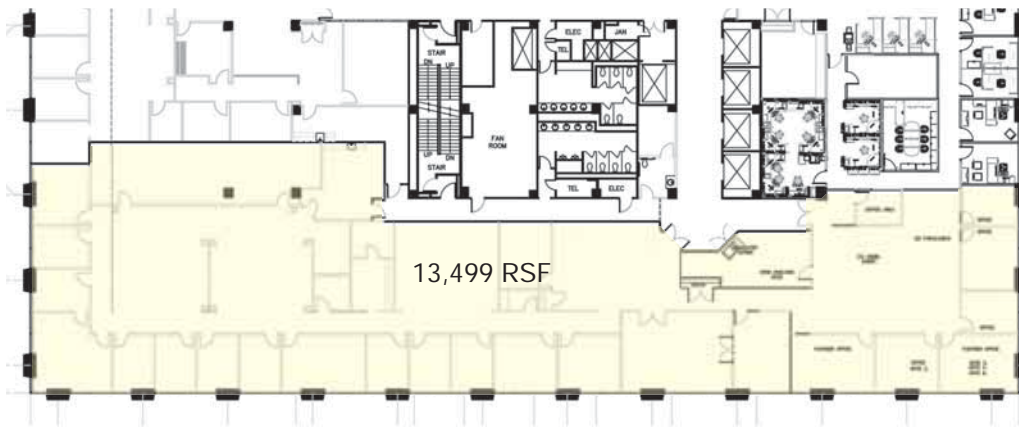


16th and 17th floor features

- Southern View of Rittenhouse Square
- High-end finishes
- Full height doors
- Glass side lights
- Floor to ceiling windows
- Upgraded ceilings with soffit treatment throughout



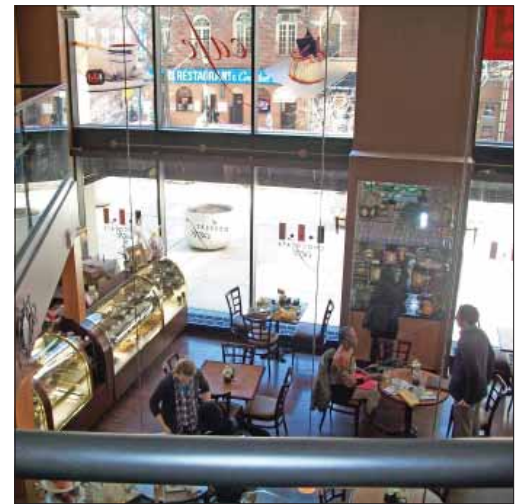
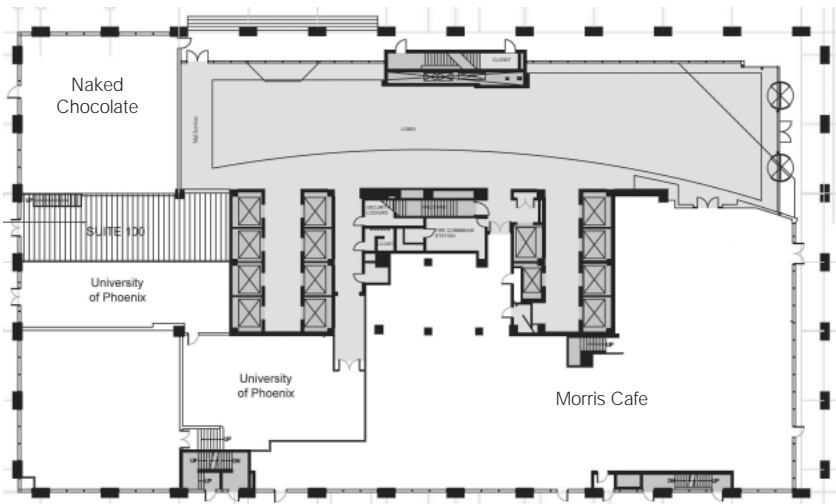
17th Floor 13,499 SF



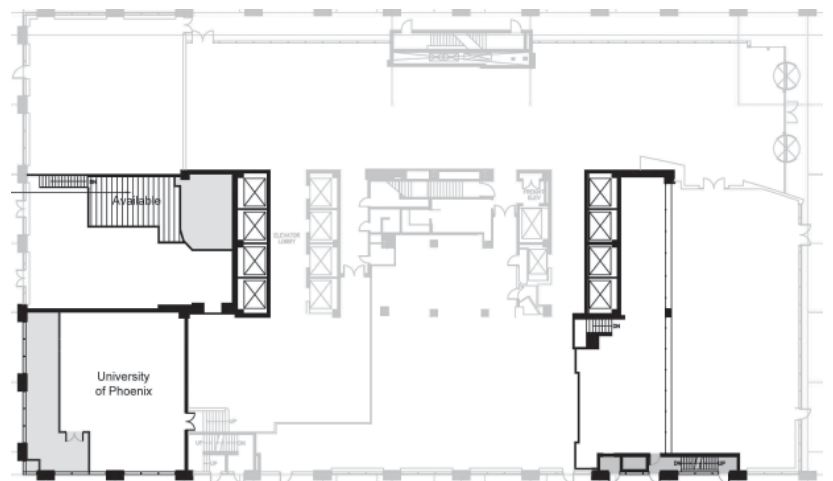
UNITED PLAZA

Unique 1st floor &
Lower Level Retail Space
Combined 16,560 SF

- \$18.00 plus electric for Lower Level space
- Direct access to Rittenhouse Square Corridor
- 13'4" Ceiling heights in Lower Level
- 22' Ceiling heights First Floor
- Outside 18th Street plaza area
- State of the art HVAC System
- Improvement Allowance Available
- Minimal columns dramatic open environments



Lower
Level



UNITED PLAZA

Most Dramatic Building
in Philadelphia



Located at the epicenter of Philadelphia's Central Business District, United Plaza is an outstanding place to do business, offering employees, clients, and business partners easy access to many commercial, cultural, and tourist attractions found nearby.

Just a few blocks from City Hall, it is a short distance from SEPTA's Suburban Station, New Jersey's PATCO Lines, and several city bus routes. There is also on site underground parking.

It's a combination that adds up to easier commutes and more productive workdays.

7,000 square feet of dramatic lobby with marble walls, granite floors, and dramatic sumiglass panels.

